

Please write clearly in block capitals.

Centre number

| | | | | |
|--|--|--|--|--|
| | | | | |
|--|--|--|--|--|

Candidate number

| | | | |
|--|--|--|--|
| | | | |
|--|--|--|--|

Surname

Forename(s)

Candidate signature

GCSE BIOLOGY

H

Higher Tier Paper 1H

Tuesday 15 May 2018

Afternoon

Time allowed: 1 hour 45 minutes

Materials

For this paper you must have:

- a ruler
- a scientific calculator.

Instructions

- Use black ink or black ball-point pen.
- Fill in the boxes at the top of this page.
- Answer **all** questions in the spaces provided.
- Do all rough work in this book. Cross through any work you do not want to be marked.
- In all calculations, show clearly how you work out your answer.

Information

- There are 100 marks available on this paper.
- The marks for questions are shown in brackets.
- You are expected to use a calculator where appropriate.
- You are reminded of the need for good English and clear presentation in your answers.

| For Examiner's Use | |
|--------------------|------|
| Question | Mark |
| 1 | |
| 2 | |
| 3 | |
| 4 | |
| 5 | |
| 6 | |
| 7 | |
| TOTAL | |

There are no questions printed on this page

*Do not write
outside the
box*

**DO NOT WRITE ON THIS PAGE
ANSWER IN THE SPACES PROVIDED**

0 1

Eating food containing *Salmonella* bacteria can cause illness.

0 1 . 1

Two symptoms of infection by *Salmonella* are vomiting and diarrhoea.

What causes these symptoms?

[1 mark]

0 1 . 2

Give **two** ways a person with a mild infection of *Salmonella* can help prevent the spread of the bacteria to other people.

[2 marks]1

2

0 1 . 3

In very serious infections of *Salmonella*, a doctor can prescribe drugs to kill the bacteria.

What type of drug can the doctor prescribe to kill the bacteria?

[1 mark]

0 1 . 4

A person with AIDS may take longer than a healthy person to recover from a *Salmonella* infection.

Explain why.

[2 marks]

Turn over ►

0 1 . 5

Salmonella bacteria can be transmitted from chickens to humans. Chickens can be vaccinated to prevent the transmission of *Salmonella* bacteria to humans.

Suggest **one** other way farmers could prevent the transmission of *Salmonella* from chickens to humans.

[1 mark]

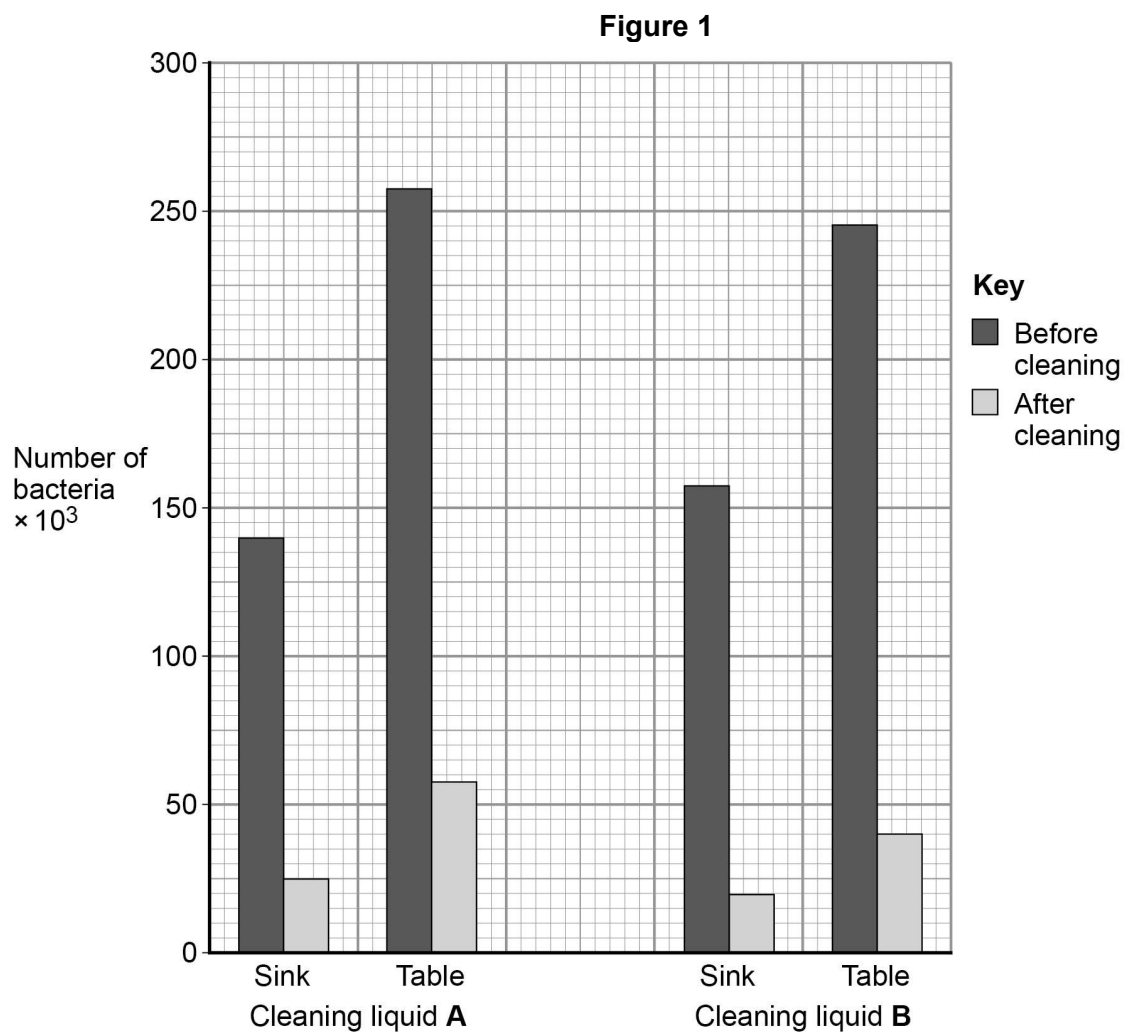
A restaurant owner employed a scientist to test the effectiveness of two kitchen cleaning liquids.

The scientist took samples from two work surfaces:

- before the surfaces had been cleaned with the cleaning liquids
- after the surfaces had been cleaned with the cleaning liquids.

The samples were then analysed for the number of bacteria they contained.

The results are shown in **Figure 1**.



0 1 . 6 Which cleaning liquid is the more effective?

Give a reason for your answer.

[1 mark]

Cleaning Liquid _____

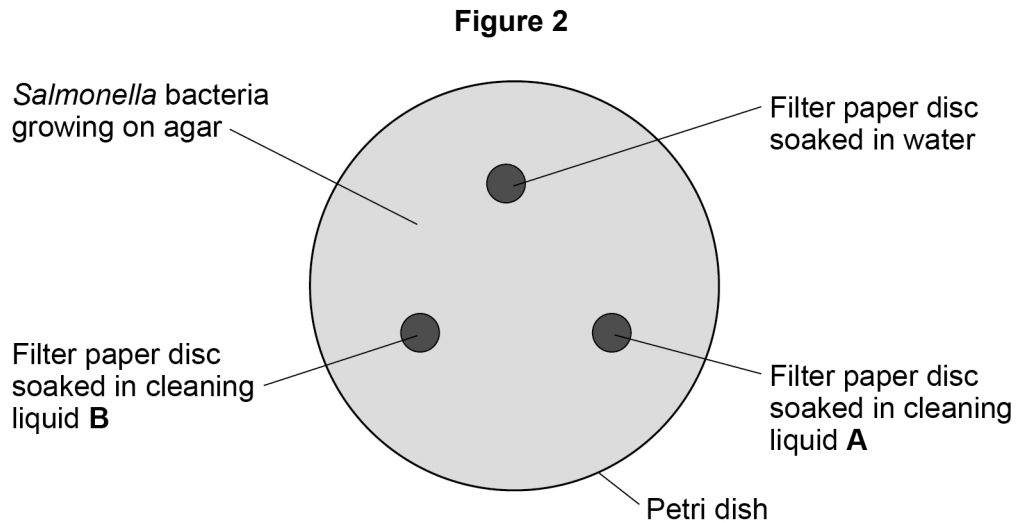
Reason _____

Question 1 continues on the next page

Turn over ►

The scientist investigated the effect of cleaning liquid **A** and cleaning liquid **B** on *Salmonella* bacteria grown in a laboratory.

Figure 2 shows the way the investigation was set up.



The Petri dish was placed in an incubator at 25 °C for 48 hours.

After 48 hours, the scientist calculated the area around each paper disc where no bacteria were growing.

The results are shown in **Table 1**.

Table 1

| Filter paper disc | Area around disc with no bacteria growing in cm ² |
|--------------------------|--|
| Water | 0 |
| Cleaning liquid A | 11 |
| Cleaning liquid B | 13 |

0 1 . 7

What measurement would the scientist need to take to calculate the area where no bacteria were growing?

[1 mark]

0 1 . 8

Give **one** change to the investigation that would allow the scientist to check if the results are repeatable.

[1 mark]

0 1 . 9

The scientist showed the results to the restaurant owner.

Both cleaning liquids cost the same per dm^3 .

Suggest **one** other factor the restaurant owner should consider when choosing which cleaning liquid to use.

[1 mark]

11**Turn over for the next question****Turn over ►**

0 2

Metabolism is the sum of all the chemical reactions in the cells of the body.

One metabolic reaction is the formation of lipids.

0 2 . 1

Give **one** other metabolic reaction in cells.

[1 mark]

Table 2 shows the mean metabolic rate of humans of different ages.

Table 2

| Age in years | Mean metabolic rate in kJ/m ² /hour | |
|--------------|--|---------|
| | Males | Females |
| 5 | 53 | 53 |
| 15 | 45 | 42 |
| 25 | 39 | 35 |
| 35 | 37 | 35 |
| 45 | 36 | 35 |

0 2 . 2

What **two** conclusions can be made from the data in **Table 2**?

[2 marks]

Tick **two** boxes.

As age increases, mean metabolic rate of males and females increases.

Males have a higher metabolic rate than females after five years of age.

The mean metabolic rate of females decreases faster than males up to 25 years of age.

The mean metabolic rate of males and females decreases more quickly after the age of 35.

There is no relationship between age and mean metabolic rate.

0 2 . 3

Calculate the percentage decrease in the mean metabolic rate of males between 5 years and 45 years of age.

Use the equation:

$$\text{percentage decrease} = \frac{\text{decrease in metabolic rate}}{\text{original metabolic rate}} \times 100$$

Give your answer to 3 significant figures.

[3 marks]

Percentage decrease = _____

Question 2 continues on the next page

Turn over ►

Regular exercise can increase metabolic rate.

Two people did five minutes of gentle exercise from rest.

Table 3 shows the effect of the exercise on their heart rates.

Table 3

| Time in minutes | Heart rate in beats per minute | |
|-----------------|--------------------------------|----------|
| | Person R | Person S |
| 0 (at rest) | 60 | 78 |
| 1 | 76 | 100 |
| 2 | 85 | 110 |
| 3 | 91 | 119 |
| 4 | 99 | 129 |
| 5 | 99 | 132 |

0 2 . 4 Describe **two** differences in the response of person **R** and person **S** to the exercise.

Use information from **Table 3**.

[2 marks]

1 _____

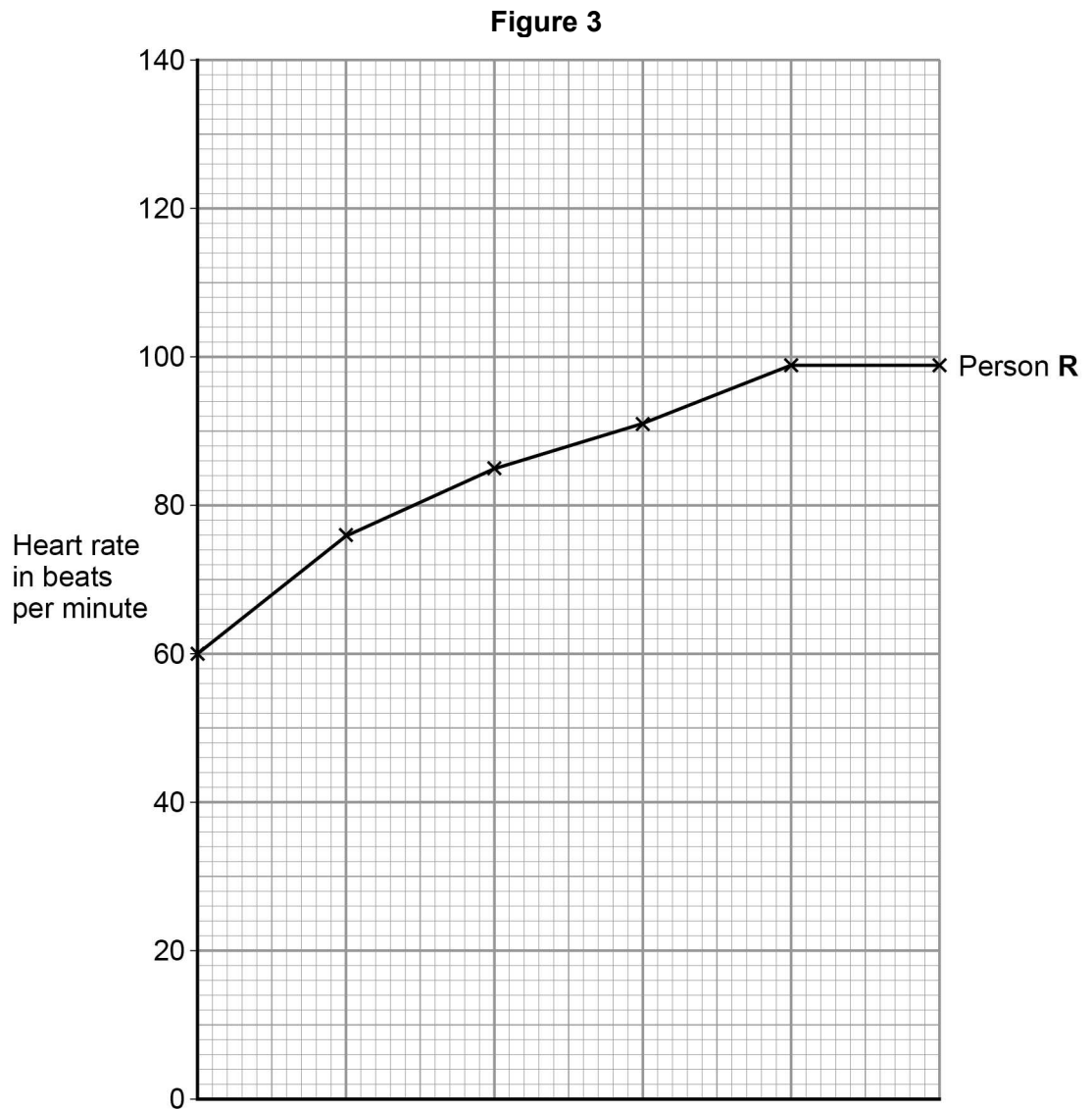
2 _____

0 2 . 5 Complete the line graph in **Figure 3** for person **S**.

You should:

- add the scale to the x axis
- label the x axis.

[4 marks]



- 0 2 . 6** After five minutes of exercise, the heart rate of person **S** was 132 beats per minute. When person **S** rested, his heart rate decreased steadily at a rate of 12 beats every minute.

Calculate how much time it would take the heart rate of person **S** to return to its resting rate.

[2 marks]

Time = _____ minutes

Turn over ►

0 3

The circulatory system is composed of the blood, blood vessels and the heart.

0 3 . 1

Urea is transported in the blood plasma.

Name **two** other substances transported in the blood plasma.

[2 marks]

1 _____

2 _____

0 3 . 2

Some athletes train at high altitude.

Training at high altitude increases the number of red blood cells per cm^3 of blood.

Explain why having more red blood cells per cm^3 of blood is an advantage to an athlete.

[3 marks]

0 3 . 3

Which **two** blood vessels carry deoxygenated blood?

[2 marks]

Tick **two** boxes.

Aorta

Coronary artery

Pulmonary artery

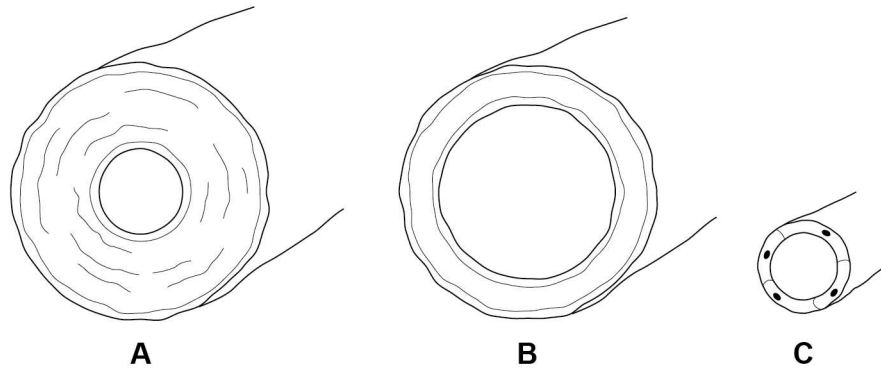
Pulmonary vein

Vena cava

Turn over ►

Figure 4 shows the three types of blood vessel.

Figure 4



0 3 . 4

Which type of blood vessel carries blood into the right atrium?

[1 mark]

Tick **one** box.

| | |
|---|--|
| A | |
|---|--|

| | |
|---|--|
| B | |
|---|--|

| | |
|---|--|
| C | |
|---|--|

0 3 . 5

Compare the structure of an artery with the structure of a vein.

[3 marks]

0 3 . 6 Heart rate is controlled by a group of cells. This group of cells act as a pacemaker.

Figure 5 shows a section through the heart.

Draw an **X** on **Figure 5** to show the position of the pacemaker.

[1 mark]

Figure 5



0 3 . 7 A patient may be fitted with an artificial pacemaker.

What condition may be treated using an artificial pacemaker?

[1 mark]

0 4

A student carried out an investigation using chicken eggs.

This is the method used.

1. Place 5 eggs in acid for 24 hours to dissolve the egg shell.
2. Measure and record the mass of each egg.
3. Place each egg into a separate beaker containing 200 cm³ of distilled water.
4. After 20 minutes, remove the eggs from the beakers and dry them gently with a paper towel.
5. Measure and record the mass of each egg.

Table 4 shows the results.

Table 4

| Egg | Mass of egg without shell in grams | Mass of egg after 20 minutes in grams |
|-----|---------------------------------------|--|
| 1 | 73.5 | 77.0 |
| 2 | 70.3 | 73.9 |
| 3 | 72.4 | 75.7 |
| 4 | 71.6 | 73.1 |
| 5 | 70.5 | 73.8 |

0 4 . 1

Another student suggested that the result for egg **4** was anomalous.

Do you agree with the student?

Give a reason for your answer.

[1 mark]

0 4 . 2 Calculate the percentage change in mass of egg 3.

[2 marks]

Percentage change in mass = _____

0 4 . 3 Explain why the masses of the eggs increased.

[3 marks]

0 4 . 4 Explain how the student could modify the investigation to determine the concentration of the solution inside each egg.

[3 marks]

Turn over ►

Chicken egg shells contain calcium. Calcium ions are moved from the shell into the cytoplasm of the egg.

*Do not write
outside the
box*

Table 5 shows information about the concentration of calcium ions.

Table 5

| Location | Concentration of calcium ions in arbitrary units |
|---------------|--|
| Egg shell | 0.6 |
| Egg cytoplasm | 2.1 |

0 4 . 5

Explain how calcium ions are moved from the shell into the cytoplasm of the egg.

[3 marks]

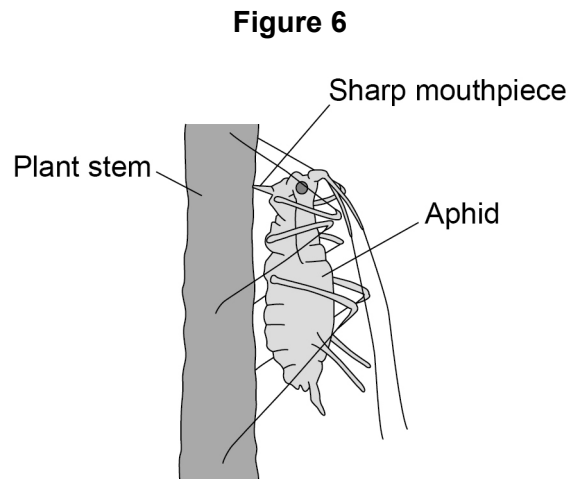
12

0 5

Plants can be infected by fungi, viruses and insects.

Aphids are small insects that carry pathogens.

Figure 6 shows an aphid feeding from a plant stem.



0 5 . 1

An aphid feeds by inserting its sharp mouthpiece into the stem of a plant.

Give the reason why the mouthpiece of an aphid contains a high concentration of dissolved sugars after feeding.

[1 mark]

Question 5 continues on the next page

Turn over ►

0 5 . 2

Plants infected with aphids may show symptoms of magnesium deficiency.

Magnesium deficiency symptoms include:

- yellow leaves
- stunted growth.

Explain how a deficiency of magnesium could cause these symptoms.

[5 marks]

0 5 . 3

A farmer thinks a potato crop is infected with potato virus Y (PVY).

The farmer obtains a monoclonal antibody test kit for PVY.

To make the monoclonal antibodies a scientist first isolates the PVY protein from the virus.

Describe how the scientist would use the protein to produce the PVY monoclonal antibody.

[4 marks]

10**Turn over ►**

Following updated research information and communications with parents of children with cystic fibrosis, we have decided to withdraw the question on this topic from this paper.

It has been decided not to provide a replacement question as it would not be possible to determine accurately how a replacement question would have performed if it had been part of the original paper taken in 2018.

The following statistics may help you to make effective use of the remainder of the paper:

Mean mark (maximum mark)

| | |
|------------|-----------|
| 06.1 | 0.47 (1) |
| 06.2 | 0.65 (1) |
| 06.3 | 2.27 (6) |
| 06.4 | 1.27 (2) |
| 06.5 | 0.69 (1) |
| 06.6 | 1.33 (2) |
| 06.7 | 0.56 (4) |
| 06.8 | 0.42 (1) |
| Question 6 | 7.66 (18) |

Turn over for the next question

*Do not write
outside the
box*

**DO NOT WRITE ON THIS PAGE
ANSWER IN THE SPACES PROVIDED**

Turn over ►

0 7

Table 8 shows information about some food components in cow's milk.

Table 8

| | Value per 500 cm ³ | Recommended Daily Allowance (RDA) for a typical adult |
|--------------------|----------------------------------|---|
| Energy in kJ | 1046 | 8700 |
| Fat in g | 8.4 | 70.0 |
| Salt in g | 0.5 | 6.0 |
| Calcium in mg | 605 | 1000 |
| Vitamin B-12 in µg | 4.5 | 2.4 |

0 7 . 1

How much **more** milk would a typical adult have to drink to get their RDA for calcium compared with the amount of milk needed to get their RDA for vitamin B-12?

[3 marks]

Volume of milk = _____ cm³

0 7 . 2

Describe how a student could test cow's milk to show whether it contains protein and different types of carbohydrate.

[6 marks]

Question 7 continues on the next page

Turn over ▶

A scientist investigated the effect of bile on the breakdown of fat in a sample of milk.

The scientist used an indicator that is colourless in solutions with a pH lower than 10, and pink in solutions with a pH above 10.

This is the method used.

1. Add 1 drop of bile to a test tube and one drop of water to a second test tube.
2. Add the following to each test tube:
 - 5 cm³ of milk
 - 7 cm³ of sodium carbonate solution (to make the solution above pH 10)
 - 5 drops of the indicator
 - 1 cm³ of lipase.
3. Time how long it takes for the indicator in the solutions to become colourless.

The results are shown in **Table 9**.

Table 9

| | Time taken for the indicator to become colourless in seconds |
|------------------------------|--|
| Solution with bile | 65 |
| Solution without bile | 143 |

0 7 . 3

Explain why the indicator in both tubes became colourless.

[3 marks]

0 7 . 4

Give the reason why the measurement of the time taken for the indicator to become colourless might be inaccurate.

[1 mark]

0 7 . 5

Explain the difference in the results for the two test tubes in **Table 9**.

[3 marks]

16**END OF QUESTIONS**

There are no questions printed on this page

**DO NOT WRITE ON THIS PAGE
ANSWER IN THE SPACES PROVIDED**

Copyright information

For confidentiality purposes, from the November 2015 examination series, acknowledgements of third party copyright material will be published in a separate booklet rather than including them on the examination paper or support materials. This booklet is published after each examination series and is available for free download from www.aqa.org.uk after the live examination series.

Permission to reproduce all copyright material has been applied for. In some cases, efforts to contact copyright-holders may have been unsuccessful and AQA will be happy to rectify any omissions of acknowledgements. If you have any queries please contact the Copyright Team, AQA, Stag Hill House, Guildford, GU2 7XJ.

Copyright © 2018 AQA and its licensors. All rights reserved.