

Please check the examination details below before entering your candidate information

Candidate surname

Other names

Centre Number

Candidate Number

--	--	--	--	--

--	--	--	--	--

## Pearson Edexcel Level 3 GCE

Wednesday 6 October 2021 – Afternoon

Time 2 hours

Paper  
reference

**9MA0/01**

# Mathematics

Advanced

**PAPER 1: Pure Mathematics 1**

**You must have:**

Mathematical Formulae and Statistical Tables (Green), calculator

Total Marks

**Candidates may use any calculator allowed by Pearson regulations. Calculators must not have the facility for symbolic algebra manipulation, differentiation and integration, or have retrievable mathematical formulae stored in them.**

### Instructions

- Use **black** ink or ball-point pen.
- If pencil is used for diagrams/sketches/graphs it must be dark (HB or B).
- **Fill in the boxes** at the top of this page with your name, centre number and candidate number.
- Answer **all** questions and ensure that your answers to parts of questions are clearly labelled.
- Answer the questions in the spaces provided – *there may be more space than you need.*
- You should show sufficient working to make your methods clear. Answers without working may not gain full credit.
- Inexact answers should be given to three significant figures unless otherwise stated.

### Information

- A booklet 'Mathematical Formulae and Statistical Tables' is provided.
- There are 15 questions in this question paper. The total mark for this paper is 100.
- The marks for **each** question are shown in brackets – *use this as a guide as to how much time to spend on each question.*

### Advice

- Read each question carefully before you start to answer it.
- Try to answer every question.
- Check your answers if you have time at the end.

Turn over ►

P68731A

©2021 Pearson Education Ltd.

A:1/1/1/1/



  
Pearson

1.

$$f(x) = ax^3 + 10x^2 - 3ax - 4$$

Given that  $(x - 1)$  is a factor of  $f(x)$ , find the value of the constant  $a$ .

You must make your method clear.

(3)

DO NOT WRITE IN THIS AREA

DO NOT WRITE IN THIS AREA

DO NOT WRITE IN THIS AREA









































































11.

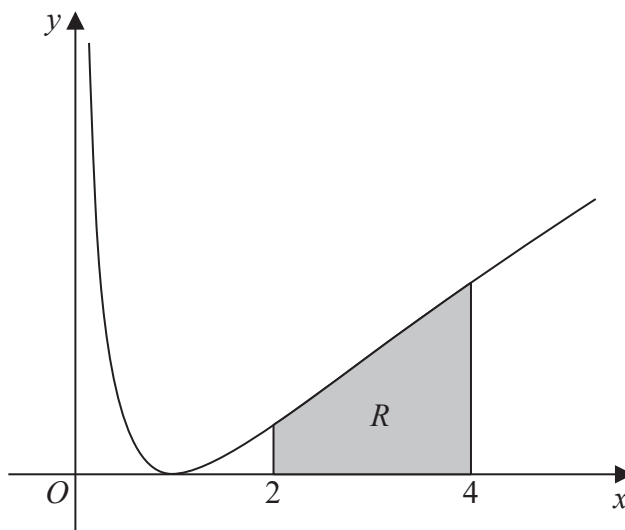


Figure 2

Figure 2 shows a sketch of part of the curve with equation

$$y = (\ln x)^2 \quad x > 0$$

The finite region  $R$ , shown shaded in Figure 2, is bounded by the curve, the line with equation  $x = 2$ , the  $x$ -axis and the line with equation  $x = 4$

The table below shows corresponding values of  $x$  and  $y$ , with the values of  $y$  given to 4 decimal places.

$x$	2	2.5	3	3.5	4
$y$	0.4805	0.8396	1.2069	1.5694	1.9218

(a) Use the trapezium rule, with all the values of  $y$  in the table, to obtain an estimate for the area of  $R$ , giving your answer to 3 significant figures.

(3)

(b) Use algebraic integration to find the exact area of  $R$ , giving your answer in the form

$$y = a(\ln 2)^2 + b \ln 2 + c$$

where  $a$ ,  $b$  and  $c$  are integers to be found.

(5)









12.

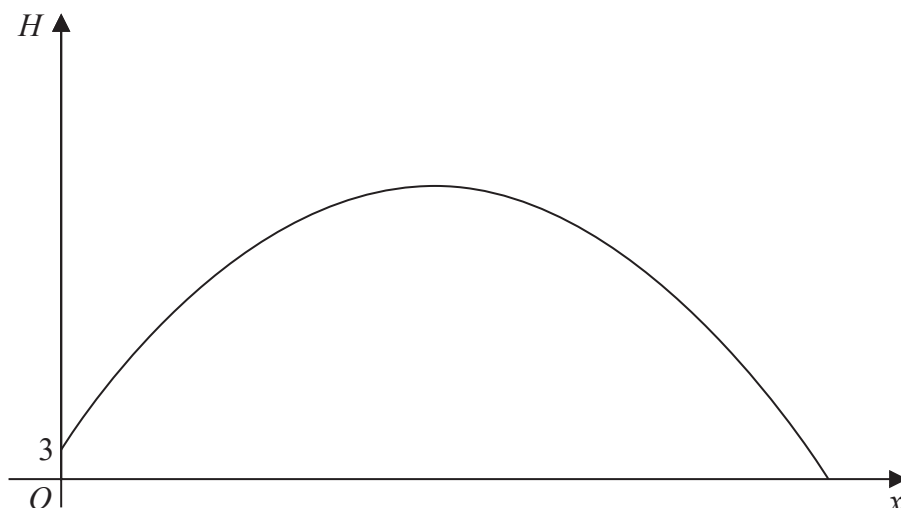


Figure 3

Figure 3 is a graph of the trajectory of a golf ball after the ball has been hit until it first hits the ground.

The vertical height,  $H$  metres, of the ball above the ground has been plotted against the horizontal distance travelled,  $x$  metres, measured from where the ball was hit.

The ball is modelled as a particle travelling in a vertical plane above horizontal ground.

Given that the ball

- is hit from a point on the top of a platform of vertical height 3 m above the ground
- reaches its maximum vertical height after travelling a horizontal distance of 90 m
- is at a vertical height of 27 m above the ground after travelling a horizontal distance of 120 m

Given also that  $H$  is modelled as a **quadratic** function in  $x$

- (a) find  $H$  in terms of  $x$  (5)
- (b) Hence find, according to the model,
- (i) the maximum vertical height of the ball above the ground,
  - (ii) the horizontal distance travelled by the ball, from when it was hit to when it first hits the ground, giving your answer to the nearest metre. (3)
- (c) The possible effects of wind or air resistance are two limitations of the model.  
Give one other limitation of this model. (1)

---



---



---



---















14. Given that

$$y = \frac{x - 4}{2 + \sqrt{x}} \quad x > 0$$

show that

$$\frac{dy}{dx} = \frac{1}{A\sqrt{x}} \quad x > 0$$

where  $A$  is a constant to be found.

(4)

DO NOT WRITE IN THIS AREA

DO NOT WRITE IN THIS AREA

DO NOT WRITE IN THIS AREA



















