

2.

$$f(x) = 5 \cos x + 12 \sin x$$

Given that $f(x) = R \cos(x - \alpha)$, where $R > 0$ and $0 < \alpha < \frac{\pi}{2}$,

(a) find the value of R and the value of α to 3 decimal places. (4)

(b) Hence solve the equation

$$5 \cos x + 12 \sin x = 6$$

for $0 \leq x < 2\pi$. (5)

(c) (i) Write down the maximum value of $5 \cos x + 12 \sin x$. (1)

(ii) Find the smallest positive value of x for which this maximum value occurs. (2)



3.

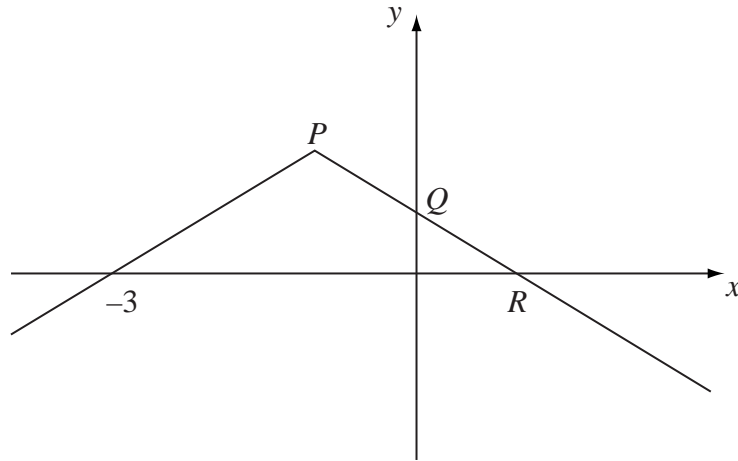


Figure 1

Figure 1 shows the graph of $y = f(x)$, $x \in \mathbb{R}$.

The graph consists of two line segments that meet at the point P .

The graph cuts the y -axis at the point Q and the x -axis at the points $(-3, 0)$ and R .

Sketch, on separate diagrams, the graphs of

(a) $y = |f(x)|$, (2)

(b) $y = f(-x)$. (2)

Given that $f(x) = 2 - |x + 1|$,

(c) find the coordinates of the points P , Q and R , (3)

(d) solve $f(x) = \frac{1}{2}x$. (5)



4. The function f is defined by

$$f : x \mapsto \frac{2(x-1)}{x^2-2x-3} - \frac{1}{x-3}, \quad x > 3.$$

(a) Show that $f(x) = \frac{1}{x+1}$, $x > 3$. (4)

(b) Find the range of f . (2)

(c) Find $f^{-1}(x)$. State the domain of this inverse function. (3)

The function g is defined by

$$g : x \mapsto 2x^2 - 3, \quad x \in \mathbb{R}.$$

(d) Solve $fg(x) = \frac{1}{8}$. (3)



Question 4 continued

Horizontal ruled lines for writing the answer to Question 4.



7.

$$f(x) = 3x^3 - 2x - 6$$

(a) Show that $f(x) = 0$ has a root, α , between $x = 1.4$ and $x = 1.45$

(2)

(b) Show that the equation $f(x) = 0$ can be written as

$$x = \sqrt{\left(\frac{2}{x} + \frac{2}{3}\right)}, \quad x \neq 0.$$

(3)

(c) Starting with $x_0 = 1.43$, use the iteration

$$x_{n+1} = \sqrt{\left(\frac{2}{x_n} + \frac{2}{3}\right)}$$

to calculate the values of x_1 , x_2 and x_3 , giving your answers to 4 decimal places.

(3)

(d) By choosing a suitable interval, show that $\alpha = 1.435$ is correct to 3 decimal places.

(3)



