

5.

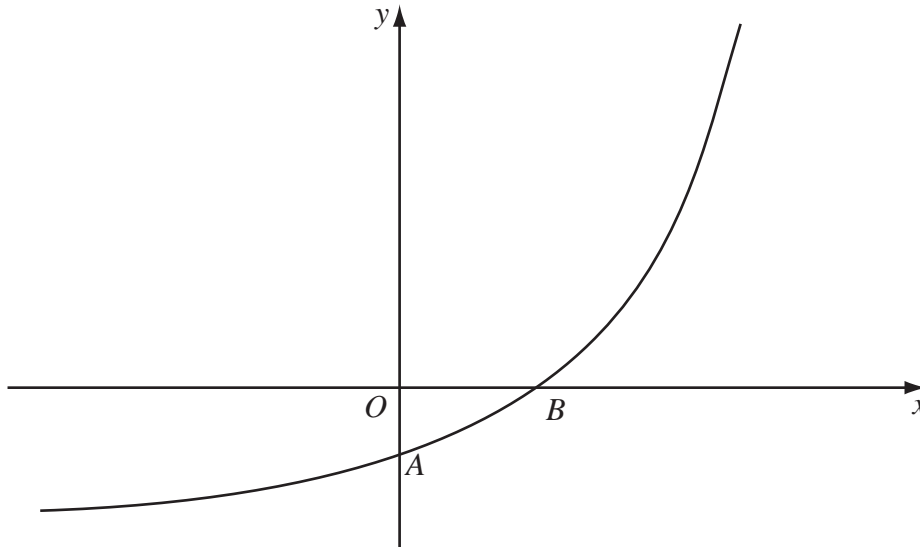


Figure 2

Figure 2 shows a sketch of part of the curve with equation $y = f(x)$, $x \in \mathbb{R}$.

The curve meets the coordinate axes at the points $A(0, 1-k)$ and $B(\frac{1}{2} \ln k, 0)$, where k is a constant and $k > 1$, as shown in Figure 2.

On separate diagrams, sketch the curve with equation

(a) $y = |f(x)|$, (3)

(b) $y = f^{-1}(x)$. (2)

Show on each sketch the coordinates, in terms of k , of each point at which the curve meets or cuts the axes.

Given that $f(x) = e^{2x} - k$,

(c) state the range of f , (1)

(d) find $f^{-1}(x)$, (3)

(e) write down the domain of f^{-1} . (1)



Question 5 continued



